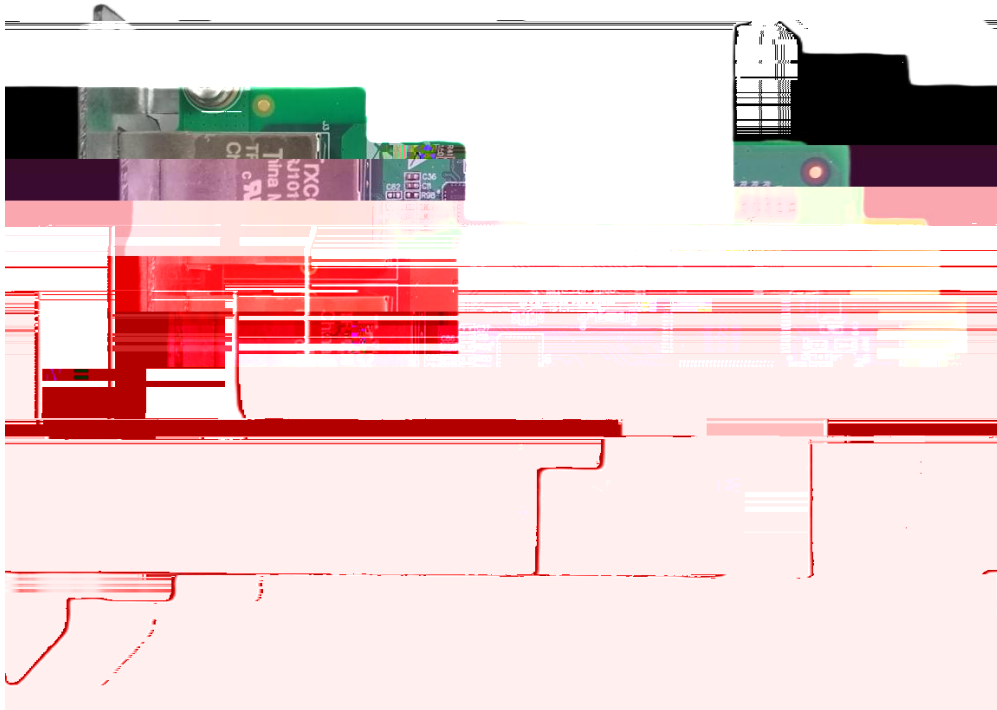


GUIDE

Ether Cat

GDHF681N4EC01A



Wuhan Guide Technology Co., Ltd.

EtherCat

EtherCat

EtherCat

EtherCat

PPO

LED

EtherCat

EtherCat

Ether Cat

GDHF681N4ECO1A

!

Ether Cat

GDHF681N4EC01A

Ether Cat

GDHF681N4EC01A

Ether Cat

GDHF681N4EC01A

Ether Cat

GDHF681N4EC01A

GDHF681N4ECO1A

EtherCat

GDHF681N4ECO1A

EtherCat

GDHF681N4ECO1A

LED

EtherCat

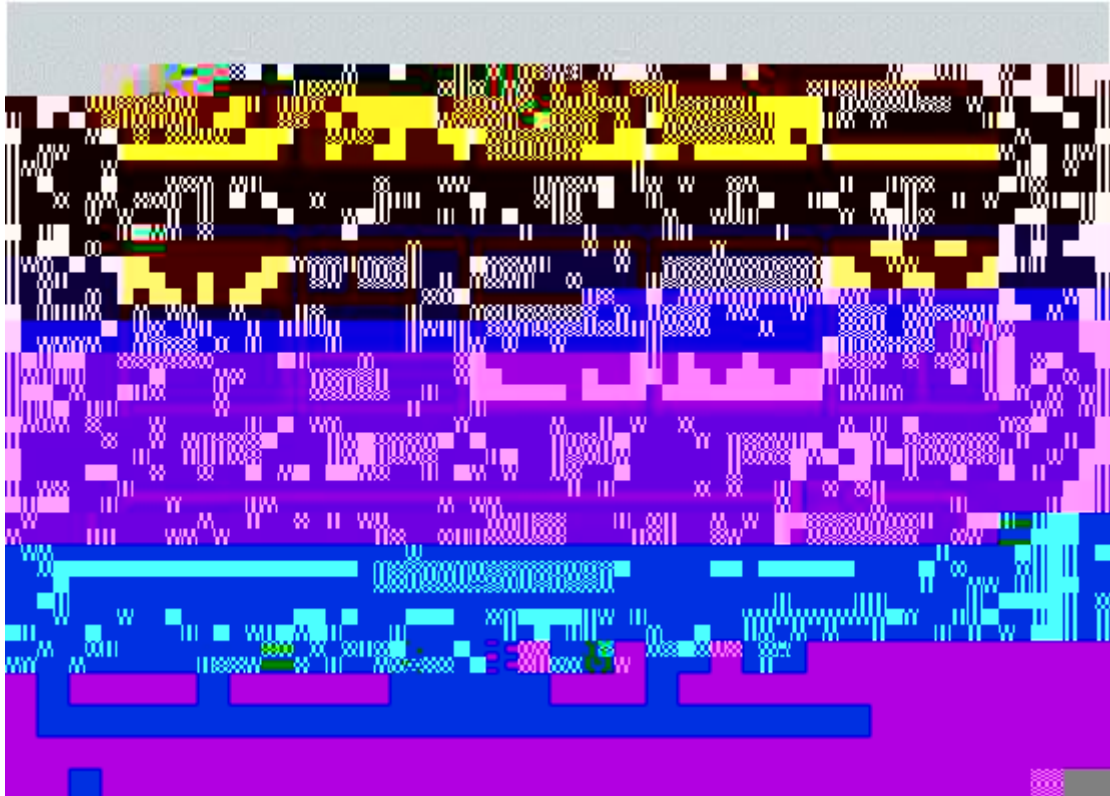


VVV

VVV

W

W



Ether Cat

GDHF681N4EC01A

HF681N

Ether Cat

Ether Cat

Ether Cat

GDHF681N4EC01A

.

Σ 8 Ἀ

8 ΕΓ-12 ᾿, CXY ἈΥἈ† ΕΒἈ᾿, CΧΟ! ρ † ΕΒ ΟC8
† ΕΒἈ - Β* - Ἀ! Δ ΧἈ!ἈἈ € Ε Ν 8g : ᾿ Χ2!Γ8

CXO

᾿, b θ - ᾿ (M-8DM • ἈΒ, κ! ᾿ Ἀ

᾿, 8-Ε +) ᾿3+C1 Β QEE σ † Ἀ

Ἀ8, > : C × ᾿ - ε Ο

8-Ε (M-8DM ᾿ Σ2 • ΚἈ!Εθ8 * +) ᾿ (8 8Ε1

- ε M

>Εε σ † η × † - ΕἈ8, ᾿M... - (Ε Ἀ

(M-8DM ᾿ Σ2 • ΚἈ!Εθ8 * +) ᾿ (8 8ΕἈ8,

᾿,) Εε σ † Ε > | ᾿Γ | = } Ἀ

᾿, ! Εε σ †] ρ | ᾿ Ἀ

᾿, ρ Εε σ †] Β+ (ε᾿ , ᾿! Γ᾿ ᾿ Ἀ

2 Ε , ᾿ Ἀ

᾿, ἈΕε σ †, 3, Β88 - Ε10 ΣΕ:0: ᾿ Γ᾿ ᾿ ΕΕ:0:

᾿, 2 Εε σ † Ε1Ε00 ΕΕε 2 Ε , ᾿ Ἀ

᾿᾿ ᾿



!

5

-
- - EtherCat

5

EtherCat

GDHF681N4ECO1A

RJ 45- 1

RJ 45- 2

RJ 45- 1	A
RJ 45- 2	B

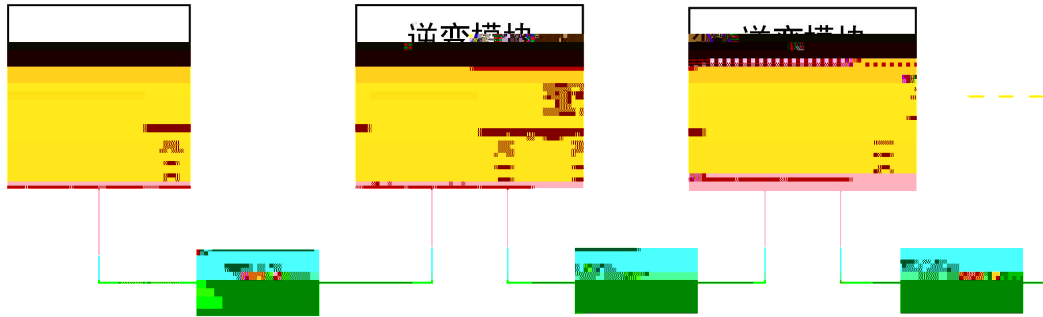
A

B

Ether Cat

5E

TI A/EI A- 568- B



Ether Cat

Ether Cat

Ether Cat

GDHF681N4ECO1A

Ether Cat

GDHF681N4ECO1A

(ESI)

www.gdetec.com

ESI

GSDML- - GUI DE- ET. XML

Ether Cat

GDHF681N4ECO1A

Ether Cat

EtherCat

P33. 0	[0]	0	1	0
	[1]			
	[0] PPO1			
P33. 2	[1] PPO2	0	2	1
	[2] PPO5			

P33. 46	[W0]	[0] × 1 [1] × 10 [2] × 100 [3] × 1000 [4] × 10000 [5] [%d] × 1 [6] [%d] × 10 [7] [%d] × 100	0 4	0
...

EtherCat

[0] EtherCat

[1] EtherCat

EtherCat

PPO Parameter/Process Data Objects, /

EtherCat PPO

2 PPO

PPPO5

HF681N

PLC



HF681N

Ä

òX

EÃð ‡]

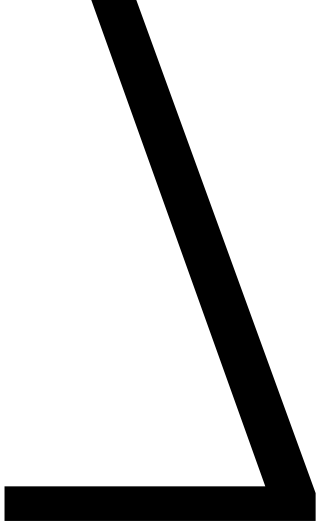
EÃ* !”

E V ‡ *

i ð *

E ð ‡

Ä



Ether Cat

Ether Cat

Ether Cat

GDHF681N4EC01A

Ether Cat

Ether Cat

PPO Parameter/Process Data Objects

/

PPO

PPO

	W 0	W 1	W 2	W 3	W 4	W 5	W 6	W 7	W 8	W 9	W 10	W 11	W 12	W 13	W 14	W 15
PPO1	V0	V1	V2	V3	V4	V5										
PPO2	V0	V1	V2	V3	V4	V5	V6	V7	V8	V9						
PPO5	V0	V1	V2	V3	V4	V5	V6	V7	V8	V9	V10	V11	V12	V13		

PLC

		bit	
			' 0'
		0 PA_ENABLE	' 1'
V0	PA_CTRL	1 WRITE	' 0'
			' 1'
		2 SAVE_to_FLASH	' 0'
			' 1' FLASH
		3	
		~ Reserved	
		15	
		byte [15 . 08]	[07 . 00]
V1	Address		
	Data		
V2	0		0
V3	Data	16	

PLC

		bit	
		0	Reserved
		1	Reserved
			' 0'
		2	SAVE_to_FLASH ' 1'
	PA_STATUS		FLASH
			' 0'
		3	ILLEGAL_ADDRES S ' 1'
		4	
		~	Reserved
		15	
		byte	[15. . 08] [07. . 00]
W1	Address	Data	
W2	0		0
WB	Data		16



CVD. 13		' 01' ' 10' ' 11'	2 3 4
CVD. 14	TORQUE_ZERO	' 0 ' 1'	
CVD. 15	FREE_RUNNING_STOP	' 0 ' 1'	

SW0. 0	READY	' 0 ' 1'	
SW0. 1	RUN	' 0 ' 1'	
SW0. 2	FAULT	' 0 ' 1'	
SW0. 3	MOTOR BRAKE	' 0 ' 1'	
SW0. 4	WARNING	' 0 ' 1'	
SW0. 5	DIRECTION	' 0 ' 1'	
SW0. 6	M_STEP0	' 0 ' 1'	1 1 1
SW0. 7	M_STEP1	' 0 ' 1'	2 2 2

SWD. 8	M_STEP2	' 0'	3
		' 1'	3
SWD. 9	M_STEP3	' 0'	4
		' 1'	4
SWD. 10	Reserved		
SWD. 11	Reserved		
SWD. 12	REMOTE/LOCAL	' 0'	/
		' 1'	
SWD. 13	Reserved		
SWD. 14	MOTION SEL	' 00'	1
		' 01'	2
SWD. 15		' 10'	3
		' 11'	4

16

1

15

EtherCat

EtherCat

16

EtherCat

LED

GDHF681N4ECO1A

2

LED

LED

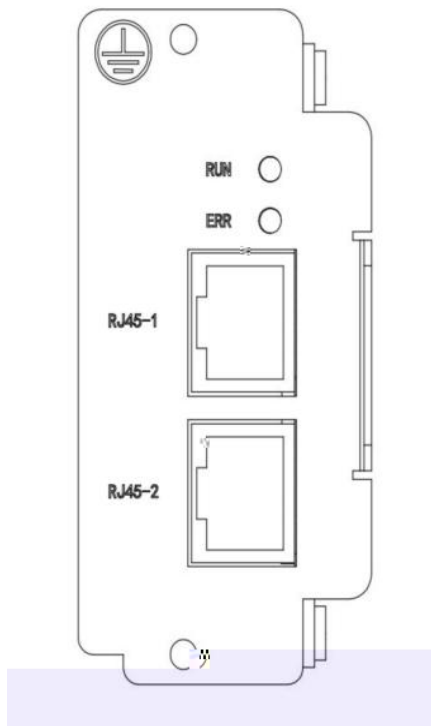
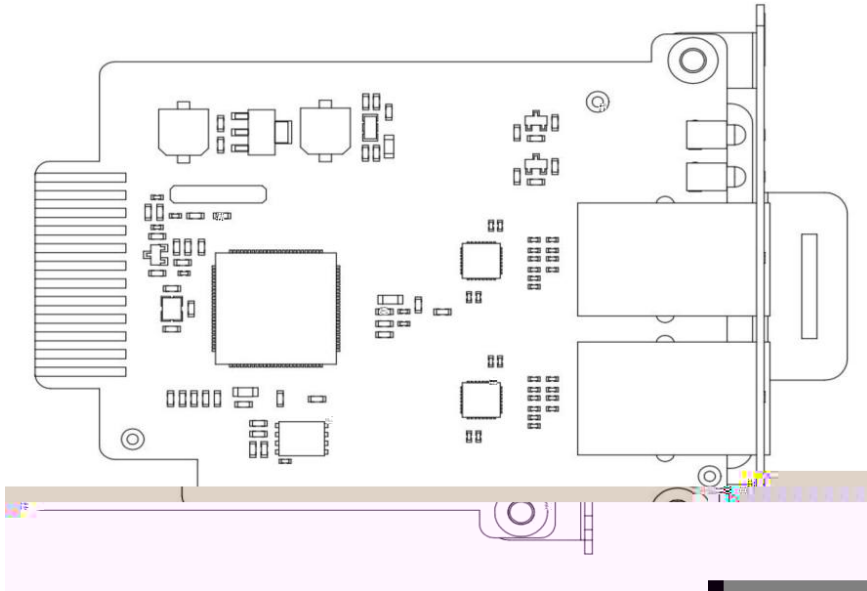
Err





www

W W



EtherCat

HF681N

- Ether Cat
-

Ether Cat

Ether Cat

5E

TI A/EI A- 568- B

	A Ether Cat	B DI N 19245 Part 1	
	135~165(3~20MHz)	100~130(f >100kHz)	W
	<30	<60	pF/m
	<110	--	/km
	>0. 64	>0. 53	mm
	>0. 34	>0. 22	mm ²

100

100Mbit/s

Ether Cat

Wuhan Guide Technology Co., Ltd.

6

430223

86-027-87927230

shfw@gdetec.com

www.gdetec.com

400-0077-570